

Handheld Ultrasound for Emergency Medicine

Clarius wireless scanners deliver an image you can trust to make a confident decision quickly.



Meet Clarius HD

Wireless and app-based, Clarius HD delivers fast imaging and sharp detail at the point of care. Cover the scanner and your smart phone completely to reduce the risk of infection.



C3 HD - Multipurpose

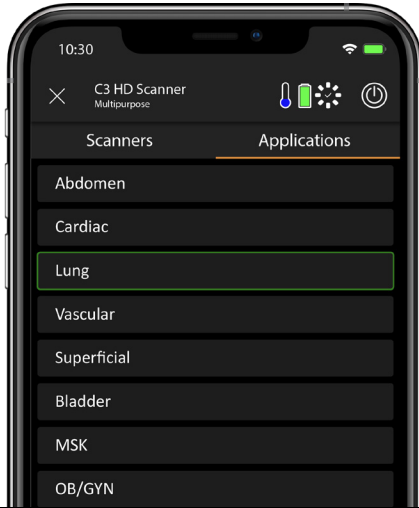
Ideal for scanning everything from cardiac, lung, bladder, vascular access and superficial.

Frequency: 2-6 MHz
Max Depth: 40 cm

PA HD - Cardiac/EMED

Designed for bedside cardiac, abdominal scanning and vascular access.

Frequency: 1-4 MHz
Max Depth: 40 cm



Automated Ultrasound

Start scanning in seconds. With AI assistance on your smart device, getting a great image is easy. You'll simply pinch to zoom, slide to change gain and tap to switch modes.

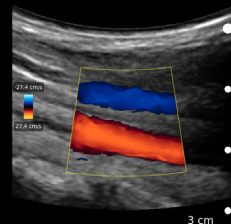
Get an image you can trust

With Clarius HD, you will see the anatomy you need to provide the best patient care.

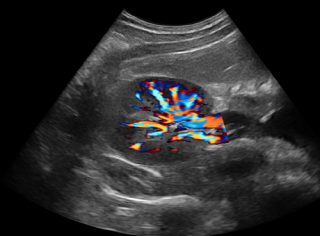
C3 HD



Abdomen



Jugular/Carotid

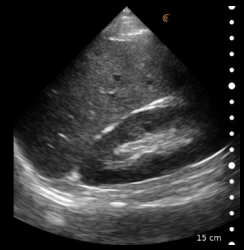


Transverse Kidney



Sub Costal 4 Chamber

PA HD



Abdomen



Cardiac

Get more for less

- ✓ No subscription required
- ✓ 3-year standard warranty
- ✓ Unlimited users
- ✓ Unlimited cloud storage



Wireless Freedom

Focus on scanning your patient without wires getting in the way. Clarius Scanners use WI-FI direct to connect to the app on your smart device. Internet access is not required.

Secure Storage

Manage patient images conveniently and securely on the HIPPA-compliant Clarius Cloud, which is included with your scanner. You can also store images directly on your smart device.

Durable and Watertight

With no moving parts or cables and a drop-safe magnesium shell, you don't have to worry about using Clarius in demanding clinical settings. They are sterilizable and submersible to 3 feet.



The Clarius HD is an impressive improvement on the original first generation scanners. With superb image quality that exceeds our cart based units, its portability and compact size make it ideal for point of care use.

Daniel Kim, MD, FRCPC - Emergency Physician



Easy to clean and disinfect

With no cords to worry about, Clarius is easy to encase and easy to clean to avoid contamination.

Minimize Exposure with Telemedicine

With Clarius Live, you can send a link to enable the recipient to view your scan on whatever device they're using.



Mechanical

- Enclosure**
- Light weight magnesium
 - Durable
 - IP67 rated for scanner and battery separately, rated for 1 meter immersion for 30 minutes

Scanner Dimensions and Weight

C3 HD	Dimensions: 164 x 78 x 38 mm Weight: 392 g
PA HD	Dimensions: 166 x 78 x 38 mm Weight: 368 g

Imaging Modes

B-Mode	Yes
M-Mode	Yes
Power Doppler	Yes
Color Doppler	Yes
Elastography	Optional
Needle Enhance (L7 HD/L15 HD)	Optional
Pulsed-Wave Doppler	Optional

About Us

Clarius' mission is to make accurate, easy-to-use and affordable ultrasound tools available to all medical professionals. Our hand-held wireless ultrasound scanners connect to iOS and Android devices, delivering high resolution ultrasound images traditionally only available with bulkier, high end systems. More than half a million scans have been performed by 20,000 users since Clarius introduced its first portable scanner in 2016. Clarius scanners are available in more than 50 countries.

Clarius Mobile Health

350-3605 Gilmore Way
 Burnaby, BC, V5G 4X5, Canada
 hello@clarius.com
 Phone: 1-778-800-9975